



# PRECISE SILENT POWER



Introducing the X Silent Edge Platinum 230V, the industry's first PSU to achieve 1100W. The Edge features totally silent and dustless performance, innovative heat pipe technology, advanced heat dissipation, 80 Plus Platinum efficiency, an active bridge rectifier, and a digital monitor powered by Cooler Master's MasterCTRL software. With these features, the Edge provides precise and silent power.

The X Silent Edge Platinum 230V also includes ATX 3.1 support, a durable 12V-2x6 cable, reliable, industrial-grade Infineon IC chips, fully modular cabling, high-quality Japanese capacitors, and a 15-year warranty. The X Silent Edge Platinum is the next frontier of silent, reliable, powerful performance.

## X Silent Edge Platinum 1100 230V

### Dustless silence

A fanless design provides total silence and a dust-free environment.

### Innovative heat pipe technology

Implements our in-house designed superconductive composite heat pipe technology.

### Advanced heat dissipation and thermal performance

A patented aluminum thermal mold efficiently dissipates heat.

### 80 Plus Platinum efficiency certification

This unit is certified to achieve more than 94% efficiency at typical loads.

### Active bridge rectifier

Bridge diodes have been replaced with an active bridge rectifier to improve performance.

### ATX 3.1 support & a durable 12V-2x6 cable

Includes ATX 3.1 support and a 90-degree 12+4pin (12V-2x6) PCIe 5.1 cable featuring lower temperatures, enhanced durability, and improved safety.

### PMBus port support

Server-level standard port monitors efficiency, fan speed, temperatures, current load, and overall performance.

### External fan port

An installed external fan can enhance heat dissipation and improve performance of the system.

### Digital monitor

Cooler Master's MasterCTRL software allows users to monitor temperature, current load, and overall performance.

### Long-lasting reliability

Built with Infineon industrial-grade IC chips for high quality performance and long-lasting reliability.

### Fully modular cabling

Efficiently reduces clutter, increases airflow, and improves overall efficiency and thermal performance.

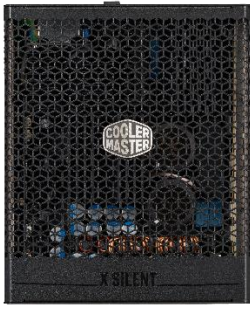
### High-quality Japanese capacitors

Large, high-quality Japanese capacitors feature reduced ripple noise and enhanced reliability.

### 15-year warranty

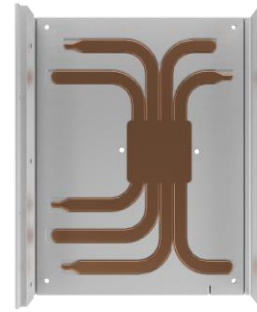
This unit comes with a standard limited manufacturing warranty of 15 years from the date of purchase.

# FEATURE HIGHLIGHTS



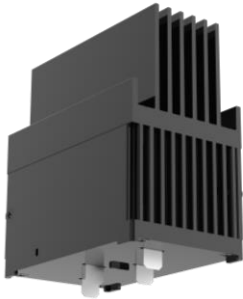
## Dust-free silence

A fanless design provides total silence and a dust-free environment.



## Innovative heat pipe technology

Implements our in-house designed superconductive composite heat pipe technology.



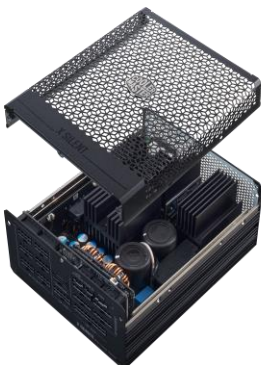
## Advanced heat dissipation and thermal performance

A patented aluminum thermal mold efficiently dissipates heat.



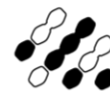
## Exceptional efficiency

Bridge diodes have been replaced with an active bridge rectifier to improve efficiency.



## Long-lasting reliability

Built with Infineon industrial-grade IC chips for high quality performance and long-lasting reliability.



**MasterCTRL**

## Digital monitor

Cooler Master's MasterCTRL software allows users to monitor temperature, current load, and overall performance.

## SPECIFICATIONS

Product Name	X Silent Edge Platinum 1100 230V				
Item Code	MPS-B001-AZBP				
ATX Version	ATX 12V Ver. 3.1				
PFC	Active PFC				
Input Voltage	200 - 240V				
Input Current	6.1A(max)				
Input Frequency	50 - 60Hz				
Dimensions (L x W x H)	180 x 150 x 86mm				
Fan Size	N/A				
Fan Bearing	N/A				
Fan Speed	N/A				
Efficiency	≥ 94% @ Typical Load				
80 PLUS Rating	80 PLUS Platinum				
ErP 2014 Lot 3	Yes				
Operating Temperature	0 ~ 40°C				
Power Good Signal	100 - 150ms				
Hold Up Time	≥ 16ms				
MTBF	>100,000 hours				
Protections	OPP / OVP / OTP / OCP / SCP / UVP / Surge & Inrush Protection				
Regulatory	TUV, CE, CCC, EAC, RCM, UKCA / BIS, KC (based on region's request.)				
Connectors	ATX 24 Pin	x1 = 1x (650mm)			
	EPS 4+4 Pin	x1 = 1x (650mm)			
	EPS 8 Pin	x1 = 1x (650mm)			
	SATA	x12 = 3x (500+150+150+150mm)			
	Peripheral 4 Pin	x4 = 1x (500+120+120+120mm)			
	PCI-e 6+2 Pin	x4 = 4x (550mm)			
	12V-2x6	x1 = 1x (650mm)			
	USB 10P	x1 = 1x (800mm)			

AC INPUT	200-240V~, 6.1A max , 50 - 60Hz				
DC OUTPUT	+3.3V	+5V	+12V	-12V	+5Vstb
	20A	20A	91.6A	0.3A	3A
TOTAL POWER	120W		1099.2W	3.6W	15W
	1100W				

## PACKING INFORMATION

Cable Type	EAN	UPC
MPS-B001-AZBP-BUK	4719512143087	884102115400
MPS-B001-AZBP-BEU	4719512143117	884102115431
MPS-B001-AZBP-BST	4719512143124	884102115448
MPS-B001-AZBP-BAU	4719512143131	884102115455
MPS-B001-AZBP-BBR	4719512143148	884102115462
MPS-B001-AZBP-BKR	4719512143155	884102115479
MPS-B001-AZBP-BIN	4719512143247	884102115561
MPS-B001-AZBP-BWO	4719512143162	884102115486
MPS-B001-AZBP-BNL	4719512143186	884102115509
MPS-B001-AZBP-BHK	4719512143193	884102115516
MPS-B001-AZBP-BBU	4719512143179	884102115493
MPS-B001-AZBP-BCN	4719512145036	N/A
MPS-B001-AZBP-BBC	4719512145043	N/A

Net Weight	4.5 kg
Gross Weight	5.2 kg
Package Dimensions (W x L x H)	382 x 224 x 126mm
Carton Dimensions (W x L x H)	396 x 265 x 250mm
Unit / Carton	2pcs
Carton / Pallet	120pcs

- All images and descriptions are solely for example purposes.
- Specifications, features, and prices are subject to change without notice.
- Specifications, appearances, and features may vary by model and region. Please refer to official specification pages for full details.
- Unless otherwise stated, all performance claims are based on theoretical performance. Actual figures may vary in real-world situations.
- Any configuration other than original product configuration is not performance guaranteed.